



Service Parts Kits

Pump Models

PP86C21 SC86C21 VP86C21

The mechanical seal kit and bearing frame kit are offered separately. We recommend ordering both kits for a major service.

Both the Mechanical Seal and Bearing Frame kits include all of the O-rings needed for service.

Part Number	Description
372000119	Mechanical Seal Repair Kit, includes O-rings
373000117	Bearing Frame Repair Kit, includes O-rings

PN 372000119 Mechanical Seal Kit

Qty	Item #	Description
1	12227101	Impeller Key
1	37500151	Impeller Lock Washer Kit
1	30400173	Mechanical Seal
1	30500184	Cassette Seal
1	30148390	O-Ring, Volute
1	30148160	O-Ring, Seal Gland
4	30148018	O-Ring, Oil Return
1	30148165	O-Ring, Bearing Cap/SAE
1	30148273	O-Ring, Bracket
1	34800105	Loctite 263, 0.5ML
1	34800104	P-80 Lubricant, 10ML

PN 373000117 Bearing Frame Kit

Qty	Item #	Description
1	32000103	Washer, Bearing
1	32100103	Nut, Bearing
2	31900201	Bearing, Drive End
1	31900102	Bearing, Pump End
1	12721104	Shim .005"
1	12721105	Shim .010"
1	12721106	Shim .015"
4	30148018	O-Ring, Oil Return
1	30148165	O-Ring, Bearing Cap
1	30148273	O-Ring, Bracket Capscrew
1	30148160	O-Ring, Volute
1	30148390	O-Ring, Backplate
1	30500176	Cassette Seal
2	30500184	Cassette Seal
2	30500150	Lip Seal
3	31858118	Tapered Rubber Plug

Service Parts Kits

Pump Models

PP86C21 SC86C21 VP86C21

Ordering Information

Parts Kits are in stock and available for shipment within 2 business days.

Please call or fax orders. Phone (503) 266-4115, Fax (503) 266-4116.

Email: Canbyparts@pioneerpump.com.

Part Number	Description
372000119.....	Mechanical Seal Kit
373000117.....	Bearing Frame Kit

Optional Parts

Additional replacement parts for this model.

Model	Description	Part Number
86C21	Impeller CA6NM	112305273
86C21	Impeller CD4MCu	112295273
86C21	Wear Ring, Cast Iron	109026379
86C21	Wear Ring, 316SS	109226379
86C21	Shaft, 17-4 SS	120275819

Notes:

1. Part numbers listed reflect updated part numbers as of June 21, 2016. Older documentation may have different part numbers. Please consult factory if differences appear.
2. Viton O-rings are included when available.



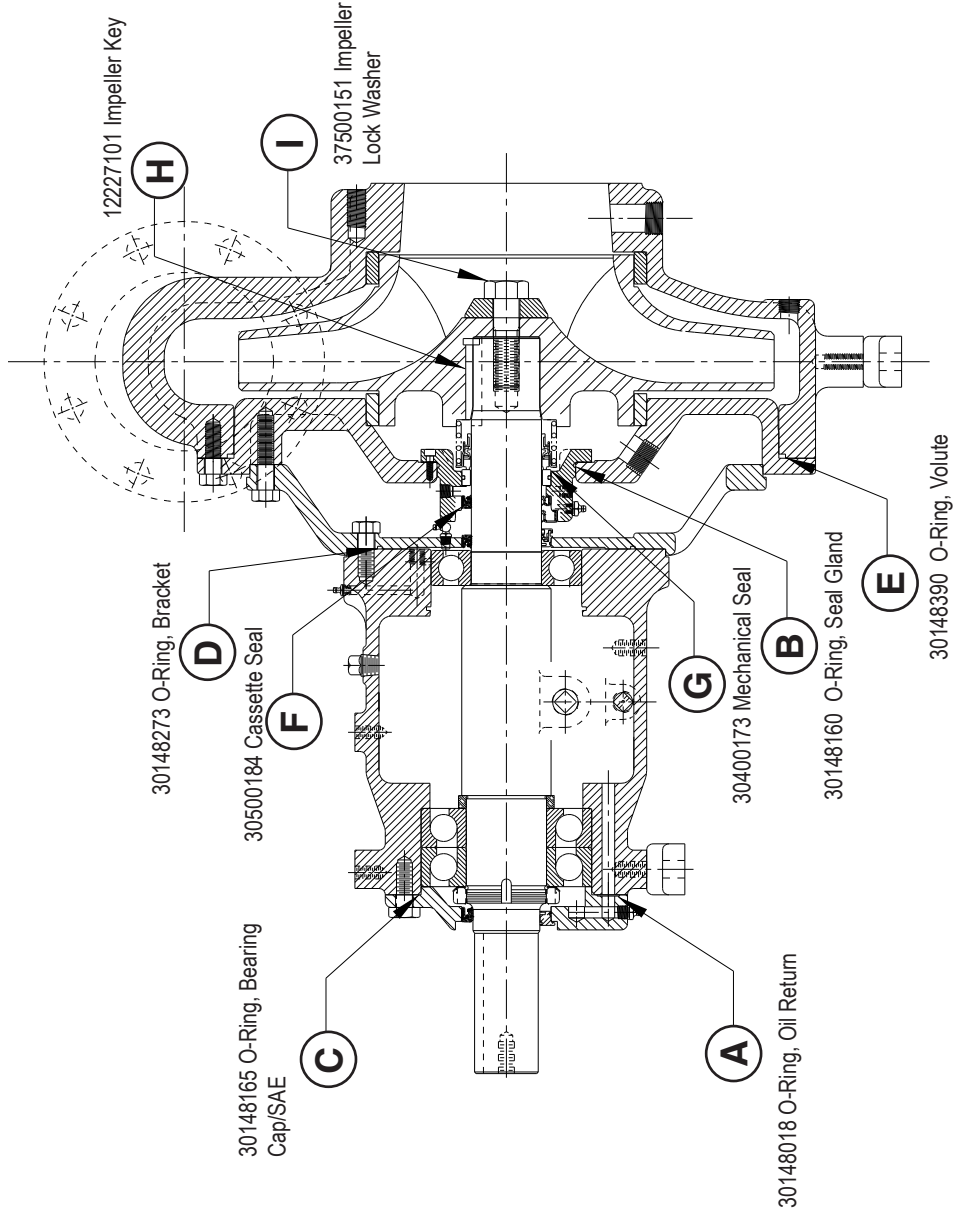
310 South Sequoia Parkway, Canby, OR 97013 USA

Phone (503) 266-4115 ■ Fax (503) 266-4116

www.pioneerpump.com

Parts Drawing - 372000119 Mechanical Seal Parts Kit

Pump Model
86C21



Ref.	Item Number	Description	Qty.
A	30148018	O-Ring, Oil Return	4
B	30148160	O-Ring, Seal Gland	1
C	30148165	O-Ring, Bearing Cap/SAE	1
D	30148273	O-Ring, Bracket	1
E	30148390	O-Ring, Volute	1
F	30500184	Cassette Seal	1
G	30400173	Mechanical Seal	1
H	12227101	Impeller Key	1
I	37500151	Impeller Lock Washer*	1
N/A	34800104	P-80 Lubricant, 10 mL	1
N/A	34800105	Loctite 263, 0.5 mL	1

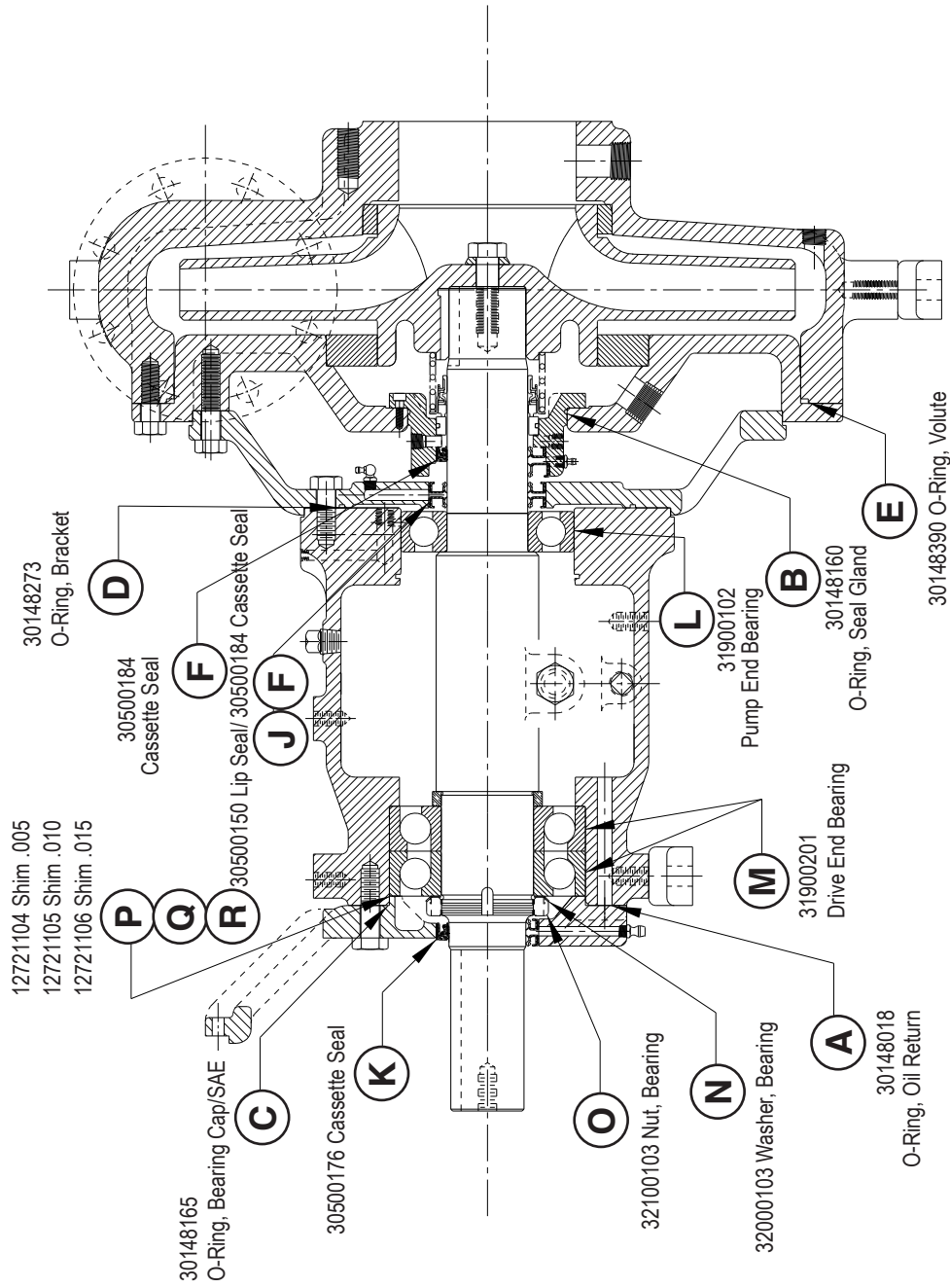
*Torque Specification: 830 lb-ft



310 South Sequoia Parkway, Canby, OR 97013 USA
 Phone (503) 266-4115 ■ Fax (503) 266-4116
www.pioneerpump.com

Parts Drawing - 373000117 Bearing Frame Parts Kit

Pump Models
64C21
86C21



PN 373000117 Bearing Frame Kit			
Ref. Item Number	Description	Qty.	
A	O-Ring, Oil Return	4	
B	O-Ring, Seal Gland	1	
C	O-Ring, Bearing Cap/SAE	1	
D	O-Ring, Bracket	1	
E	O-Ring, Volute	1	
F	Cassette Seal	2	
J	Lip Seal	2	
K	Cassette Seal	1	
L	Pump End Bearing	1	
M	Drive End Bearing	2	
N	Washer, Bearing	1	
O	Nut, Bearing	1	
P	Shim, .005 Thick	1	
Q	Shim, .010 Thick	1	
R	Shim, .015 Thick	1	
N/A	Tapered Rubber Plug	3	