



Service Parts Kits

Pump Models

PP64C21 SC64C21 VP64C21

The mechanical seal kit and bearing frame kit are offered separately. We recommend ordering both kits for a major service.

Both the Mechanical Seal and Bearing Frame kits include all of the O-rings needed for service.

Part Number	Description
372000120	Mechanical Seal Repair Kit, includes O-rings
373000117	Bearing Frame Repair Kit, includes O-rings

PN 372000120 Mechanical Seal Kit

Qty	Item #	Description
1	12227101	Impeller Key
1	30400173	Mechanical Seal
1	30148390	O-Ring, Volute
1	30148160	O-Ring, Backplate
4	30148018	O-Ring, Oil Return
1	30148165	O-Ring, Bearing Cap
1	30148273	O-Ring, Bracket Capscrew
1	37500121	Lock Washer Kit
1	30500184	Cassette Seal
1	34800104	P-80 Lubricant, 10ML
1	34800105	Loctite 263, 0.5ML

PN 373000117 Bearing Frame Kit

Qty	Item #	Description
1	32000103	Washer, Bearing
1	32100103	Nut, Bearing
2	31900201	Bearing, Drive End
1	31900102	Bearing, Pump End
1	12721104	Shim .005"
1	12721105	Shim .010"
1	12721106	Shim .015"
4	30148018	O-Ring, Oil Return
1	30148165	O-Ring, Bearing Cap
1	30148273	O-Ring, Bracket Capscrew
1	30148160	O-Ring, Volute
1	30148390	O-Ring, Backplate
1	30500176	Cassette Seal
2	30500184	Cassette Seal
2	30500150	Lip Seal
3	31858118	Tapered Rubber Plug

Service Parts Kits

Pump Models

PP64C21 SC64C21 VP64C21

Ordering Information

Parts Kits are in stock and available for shipment within 2 business days.

Please call or fax orders. Phone (503) 266-4115, Fax (503) 266-4116.

Email: Canbyparts@pioneerpump.com.

Part Number	Description
372000120.....	Mechanical Seal Kit
373000117.....	Bearing Frame Kit

Optional Parts

Additional replacement parts for this model.

Model	Description	Part Number
64C21	Impeller, CA6NM	1123008805
64C21	Impeller, CD4MCu	1122908805
64C21	Eye Wear Ring, Cast Iron.....	10902175
64C21	Hub Wear Ring, Cast Iron	1090207869
64C21	Eye Wear Ring, 316SS.....	10922175
64C21	Hub Wear Ring, 316SS	1092207869
64C21	Shaft, 17-4 SS	1202707822

Notes:

1. Part numbers listed reflect updated part numbers as of July 11, 2016. Older documentation may have different part numbers. Please consult factory if differences appear.
2. Viton O-rings are included when available.



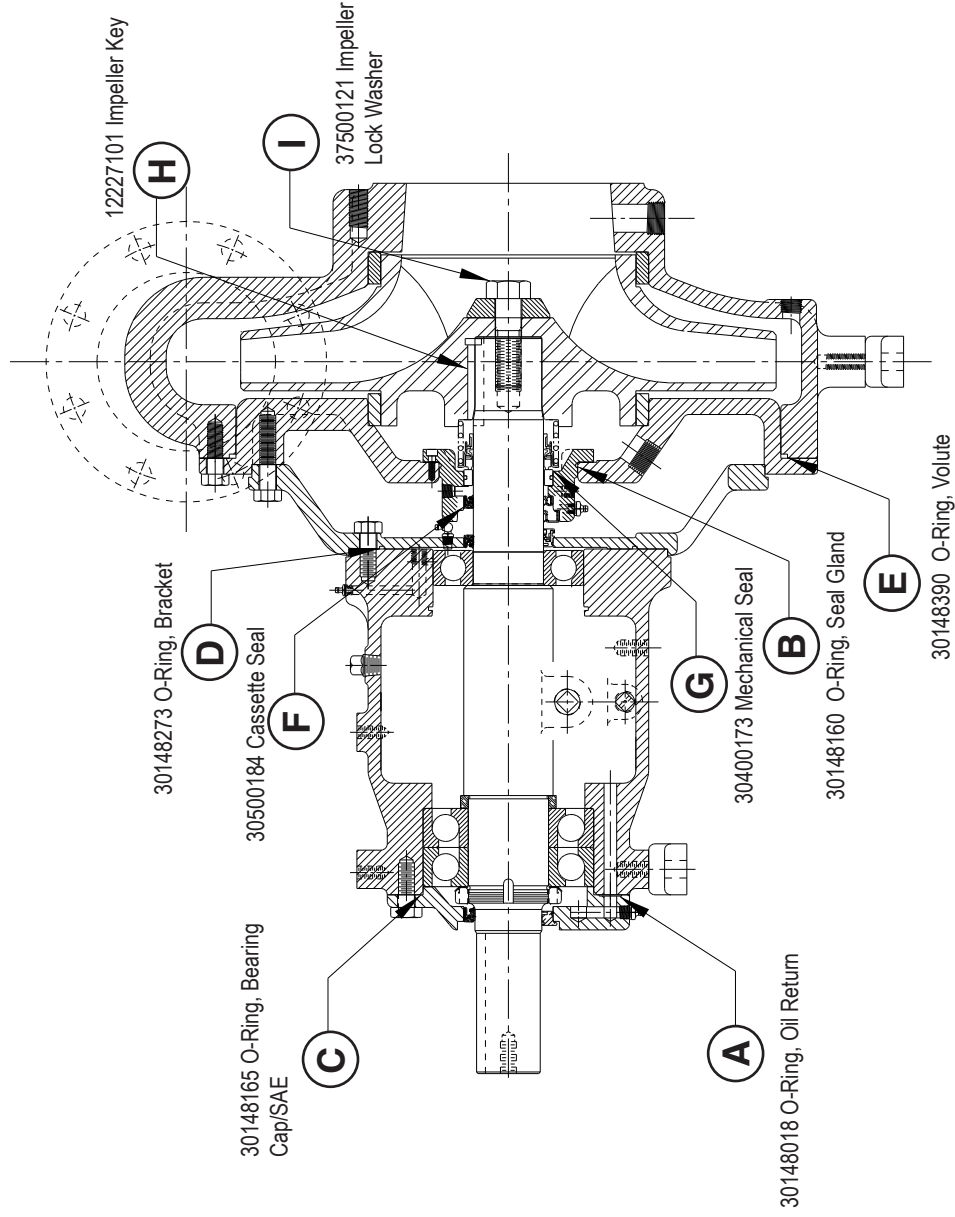
310 South Sequoia Parkway, Canby, OR 97013 USA

Phone (503) 266-4115 ■ Fax (503) 266-4116

www.pioneerpump.com

Parts Drawing - 372000119 Mechanical Seal Parts Kit

Pump Model
64C21



Ref.	Item Number	Description	Qty.
A	30148018	O-Ring, Oil Return	4
B	30148160	O-Ring, Seal Gland	1
C	30148165	O-Ring, Bearing Cap/SAE	1
D	30148273	O-Ring, Bracket	1
E	30148390	O-Ring, Volute	1
F	30500184	Cassette Seal	1
G	30400173	Mechanical Seal	1
H	12227101	Impeller Key	1
I	37500121	Impeller Lock Washer*	1
N/A	34800104	P-80 Lubricant, 10 mL	1
N/A	34800105	Loctite 263, 0.5 mL	1

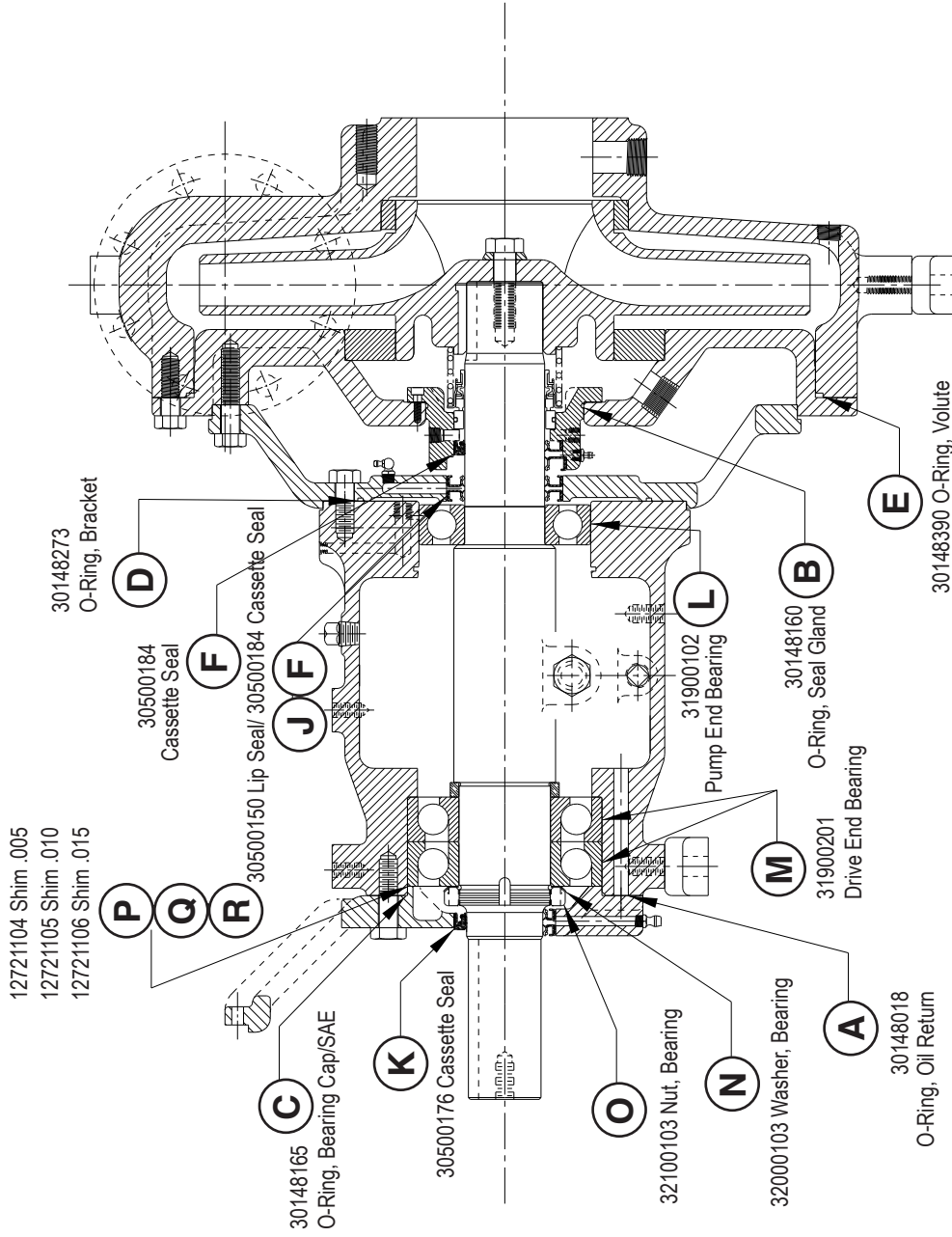
*Torque Specification: 330 lb-ft



310 South Sequoia Parkway, Canby, OR 97013 USA
 Phone (503) 266-4115 ■ Fax (503) 266-4116
www.pioneerpump.com

Parts Drawing - 373000117 Bearing Frame Parts Kit

Pump Models
64C21



PN 373000117 Bearing Frame Kit			
Ref. Item Number	Description	Qty.	
A	30148018 O-Ring, Oil Return	4	
B	30148160 O-Ring, Seal Gland	1	
C	30148165 O-Ring, Bearing Cap/SAE	1	
D	30148273 O-Ring, Bracket	1	
E	30148390 O-Ring, Volute	1	
F	30500184 Cassette Seal	2	
J	30500150 Lip Seal	2	
K	30500176 Cassette Seal	1	
L	31900102 Pump End Bearing	1	
M	31900201 Drive End Bearing	2	
N	32000103 Washer, Bearing	1	
O	32100103 Nut, Bearing	1	
P	12721104 Shim, .005 Thick	1	
Q	12721105 Shim, .010 Thick	1	
R	12721106 Shim, .015 Thick	1	
N/A	31858118 Tapered Rubber Plug	3	



310 South Sequoia Parkway, Canby, OR 97013 USA
 Phone (503) 266-4115 ■ Fax (503) 266-4116
www.pioneerpump.com