



## Service Parts Kits

### Pump Models

PP43C21 SC43C21 VP43C21

The mechanical seal kit and bearing frame kit are offered separately. We recommend ordering both kits for a major service.

Both the Mechanical Seal and Bearing Frame kits include all of the O-rings needed for service.

Part Number	Description
372000121	Mechanical Seal Repair Kit, includes O-rings
373000126	Bearing Frame Repair Kit, includes O-rings

#### PN 372000121 Mechanical Seal Kit

Qty	Item #	Description
1	12227122	Impeller Key
1	30400172	Mechanical Seal
1	30148390	O-Ring, Volute
1	30148160	O-Ring, Seal Gland
4	30148018	O-Ring, Oil Return
1	30148165	O-Ring, Bearing Cap
1	30148273	O-Ring, Bracket Capscrew
1	34800105	Loctite 263, 0.5ML
1	34800104	P-80 Lubricant, 10ML
1	37500121	Lock Washer Kit
1	30500179	Cassette Seal
1	30500112	Lip Seal

#### PN 373000126 Bearing Frame Kit

Qty	Item #	Description
1	32000103	Washer, Bearing
1	32100103	Nut, Bearing
2	31900201	Bearing, Drive End
1	31900102	Bearing, Pump End
3	31858118	Tapered Rubber Plug
1	12721104	Shim .005"
1	12721105	Shim .010"
1	12721106	Shim .015"
4	30148018	O-Ring, Oil Return
1	30148165	O-Ring, Bearing Cap
1	30148273	O-Ring, Bracket Capscrew
1	30148160	O-Ring, Seal Gland
1	30148390	O-Ring, Volute
1	30500176	Cassette Seal
2	30500150	Lip Seal
1	30500184	Cassette Seal
1	30500179	Cassette Seal
1	30500112	Lip Seal

# Service Parts Kits

## Pump Models

PP43C21 SC43C21 VP43C21

### Ordering Information

Parts Kits are in stock and available for shipment within 2 business days.

Please call or fax orders. Phone (503) 266-4115, Fax (503) 266-4116.

Email: [Canbyparts@pioneerpump.com](mailto:Canbyparts@pioneerpump.com).

Part Number	Description
372000121.....	Mechanical Seal Kit
373000126.....	Bearing Frame Kit

### Optional Parts

Additional replacement parts for this model.

Model	Description	Part Number
43C21 .....	Impeller, CA6NM .....	112307158
43C21 .....	Impeller, CD4MCu .....	112297158
43C21 .....	Eye Wear Ring, Cast Iron.....	10902242
43C21 .....	Hub Wear Ring, Cast Iron .....	1090207986
43C21 .....	Eye Wear Ring, 316SS.....	10922242
43C21 .....	Hub Wear Ring, 316SS .....	1092207986
43C21 .....	Shaft, 17-4 SS .....	1202707841

### Notes:

1. Part numbers listed reflect updated part numbers as of July 11, 2016. Older documentation may have different part numbers. Please consult factory if differences appear.
2. Viton O-rings are included when available.



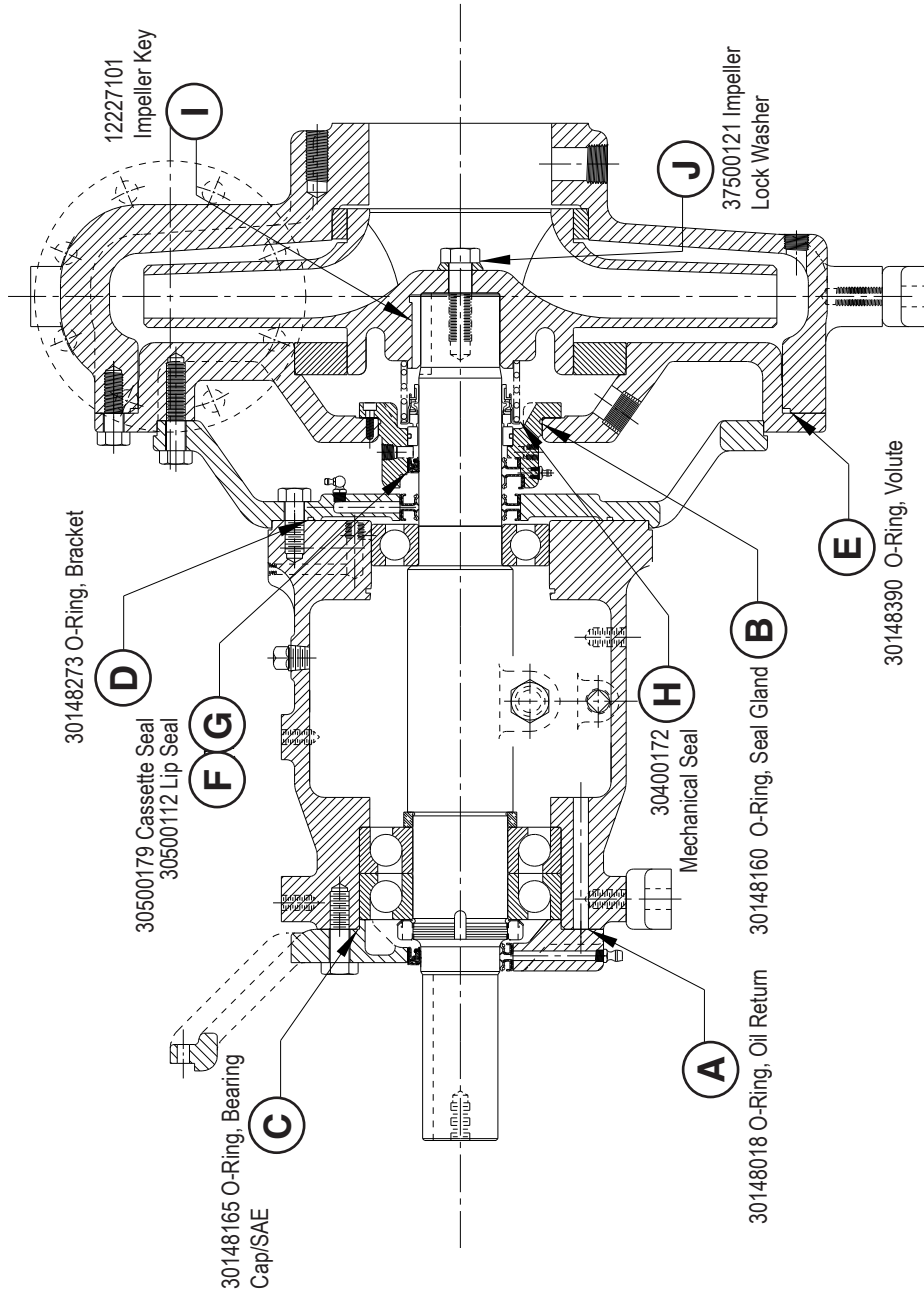
310 South Sequoia Parkway, Canby, OR 97013 USA

Phone (503) 266-4115 ■ Fax (503) 266-4116

[www.pioneerpump.com](http://www.pioneerpump.com)

# Parts Drawing - 372000119 Mechanical Seal Parts Kit

Pump Model  
43C21



Ref.	Item Number	Description	Qty.
A	30148018	O-Ring, Oil Return	4
B	30148160	O-Ring, Seal Gland	1
C	30148165	O-Ring, Bearing Cap/SAE	1
D	30148273	O-Ring, Bracket	1
E	30148390	O-Ring, Volute	1
F	30500179	Cassette Seal	1
G	30500112	Lip Seal	1
H	30400172	Mechanical Seal	1
I	12227101	Impeller Key	1
J	37500121	Impeller Lock Washer*	1
N/A	34800104	P-80 Lubricant, 10 mL	1
N/A	34800105	Loctite 263, 0.5 mL	1

For the shallow bore seal gland (0.38" depth) use the lip seal (Item G)  
For the deep bore seal gland (0.51" depth) use the cassette seal (Item F)

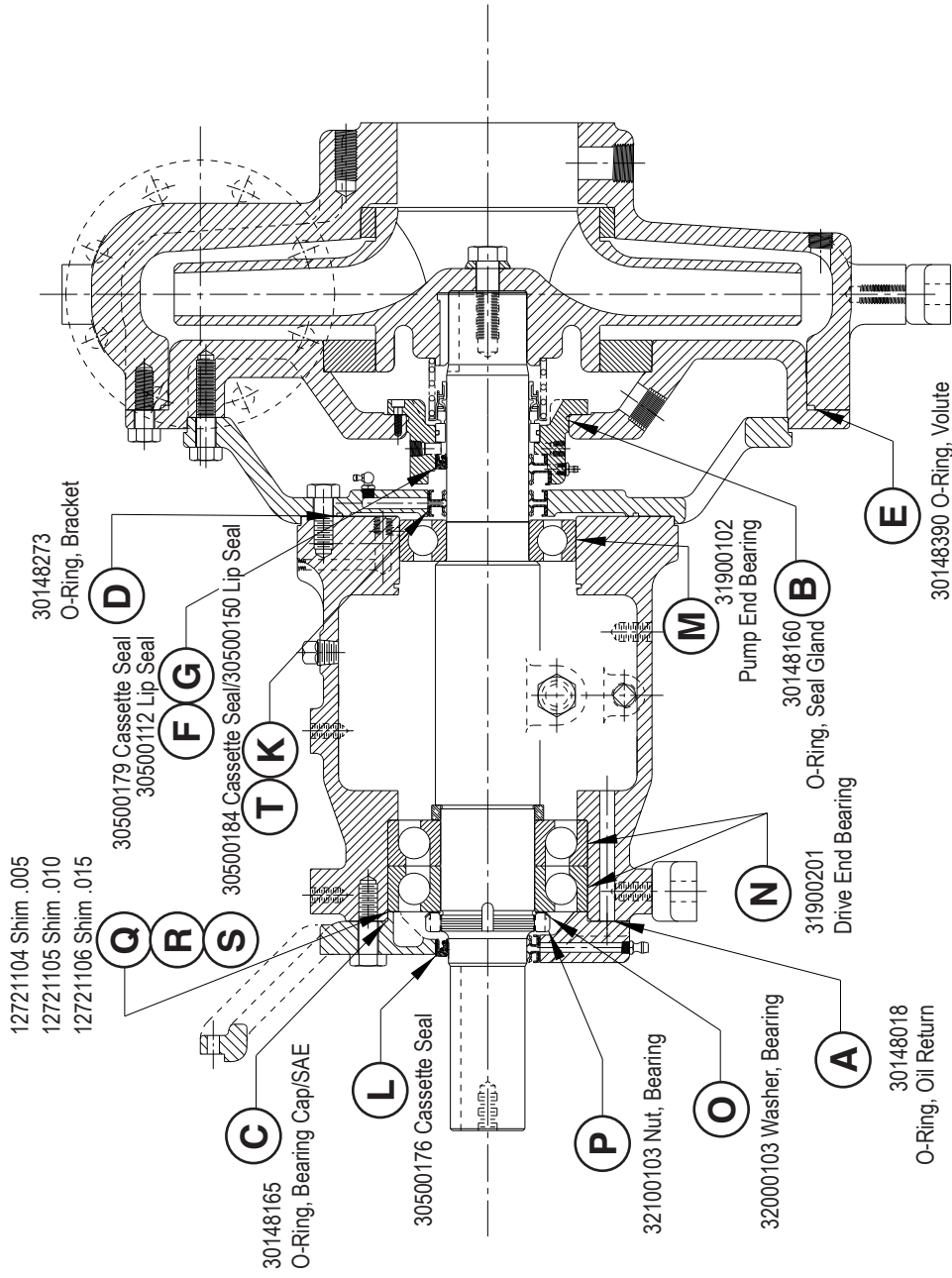
\*Torque Specification: 330 Lb-ft



310 South Sequoia Parkway, Canby, OR 97013 USA  
Phone (503) 266-4115 ■ Fax (503) 266-4116  
[www.pioneerpump.com](http://www.pioneerpump.com)

# Parts Drawing - 373000126 Bearing Frame Parts Kit

Pump Models  
43C21



**PN 373000126 Bearing Frame Kit**  
Ref. Item Number Description Qty.

Ref. Item Number	Description	Qty.
A	O-Ring, Oil Return	4
B	O-Ring, Seal Gland	1
C	O-Ring, Bearing Cap/SAE	1
D	O-Ring, Bracket	1
E	O-Ring, Volute	1
F	Cassette Seal	1
G	Lip Seal	1
K	Lip Seal	2
L	Cassette Seal	1
M	Pump End Bearing	1
N	Drive End Bearing	2
O	Washer, Bearing	1
P	Nut, Bearing	1
Q	Shim, .005 Thick	1
R	Shim, .010 Thick	1
S	Shim, .015 Thick	1
T	Cassette Seal	1
N/A	Tapered Rubber Plug	3

For the shallow bore seal gland (0.38" depth) use the lip seal (Item G)  
For the deep bore seal gland (0.51" depth) use the cassette seal (Item F)



310 South Sequoia Parkway, Canby, OR 97013 USA  
Phone (503) 266-4115 ■ Fax (503) 266-4116  
[www.pioneerpump.com](http://www.pioneerpump.com)