

The mechanical seal kit and bearing frame kit are offered separately. We recommend ordering both kits for a major service.

Both the Mechanical Seal and Bearing Frame kits include all of the O-rings needed for service.



<b>Part Number</b>	<b>Description</b>
372000107	Mechanical Seal Kit, includes O-rings
373000105	Bearing Frame Kit, includes O-rings

**PN 372000107 Mechanical Seal Kit**

<b>Qty</b>	<b>Item #</b>	<b>Description</b>
1	12721110	Shim 2.56 X 1.28 X .005
1	12721111	Shim 2.56 X 1.28 X .010
1	12721112	Shim 2.56 X 1.28 X .015
1	30422187	Cartridge Seal Assy
1	32635062F125	Impeller Screw
1	30148273	O-Ring, Seal Plate Cover
2	30148449	O-Ring, Inspection Cover (P4) Bearing Housing (P4)
2	30147454	O-Ring, Inspection Cover (P6) Bearing Housing (P6)
1	31852905	Gasket Seal Plate
1	12211110	Key 3/8 X 3/8 X 2.50 Lg
1	21422783	Impeller Washer
1	34800104	P-80 Lubricant, 10ML
1	34800105	Loctite 263, 0.5ML

**PN 373000105 Bearing Frame Kit**

<b>Qty</b>	<b>Item #</b>	<b>Description</b>
2	30500110	Lip Seal
1	31900106	Bearing
1	31900107	Bearing
1	353005100156	Snap Ring
1	30148273	O-Ring, Seal Plate Cover
2	30148449	O-Ring, Inspection Cover (P4) Bearing Housing (P4)
1	30147454	O-Ring, Inspection Cover (P6) Bearing Housing (P6)
1	31852904	Gasket, Brg Cap
1	318527849	Gasket Seal Plate

# Service Parts Kits

Pump Models  
P4 P6

## Ordering Information

Parts Kits are in stock and available for shipment within 2 business days.

Please call or fax orders. Phone (503) 266-4115, Fax (503) 266-4116.

Email: [Canbyparts@pioneerpump.com](mailto:Canbyparts@pioneerpump.com).

Part Number	Description
372000107	Mechanical Seal Kit
373000105	Bearing Frame Kit

## Optional Parts

Additional parts for this model.

Model	Description	Part Number
P4	Wear Plate	23411693
P4	Impeller, 316 SS	21222774
P4	Impeller, Ductile Iron	21204774
P6	Wear Plate	23411723
P6	Impeller, 316 SS	21222775
P6	Impeller, Ductile Iron	21204775

## Notes:

1. Part numbers listed reflect updated part numbers as of June 21, 2016. Older documentation may have different part numbers. Please consult factory if differences appear.
2. Viton O-rings are included when available.



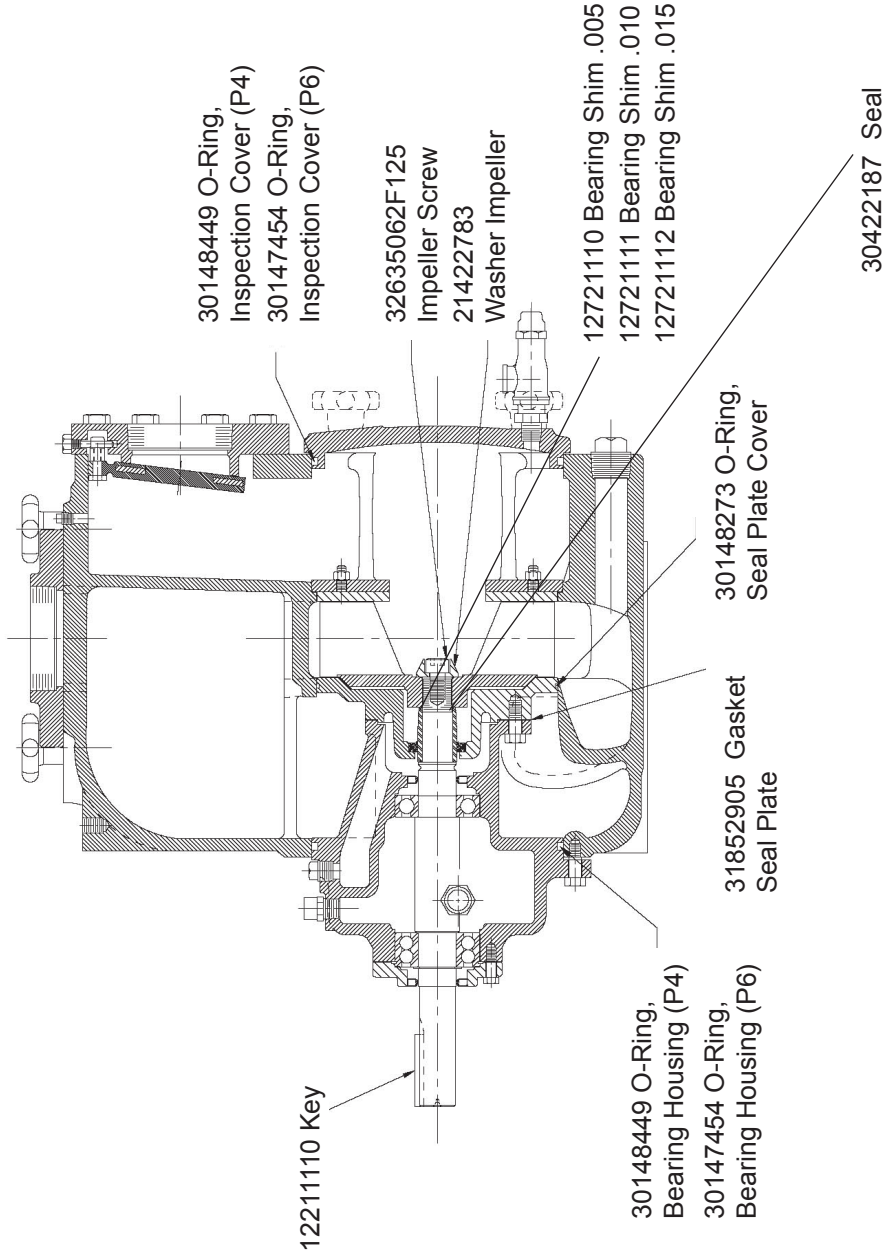
310 South Sequoia Parkway, Canby, OR 97013 USA

Phone (503) 266-4115 ■ Fax (503) 266-4116

[www.pioneerpump.com](http://www.pioneerpump.com)

# Parts Drawing - 372000107 Mechanical Seal Parts Kit

Pump Models  
P4 / P6

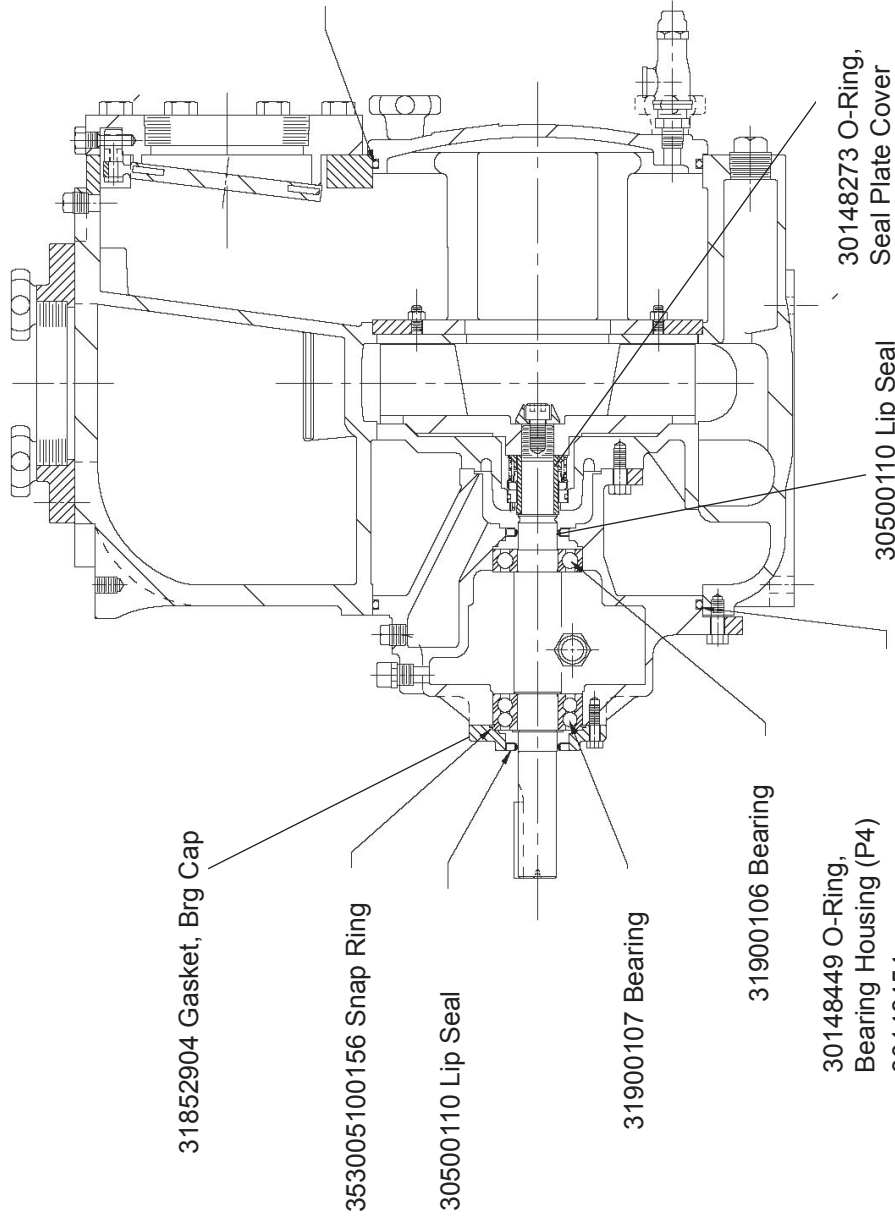


## PN 372000107 Mechanical Seal Kit

Qty	Item #	Description
1	12721110	Shim 2.56 X 1.28 X .005
1	12721111	Shim 2.56 X 1.28 X .010
1	12721112	Shim 2.56 X 1.28 X .015
1	30422187	Cartridge Seal Assy
1	32635062F125	Impeller Screw
1	30148273	O-Ring, Seal Plate Cover
2	30148449	O-Ring, Inspection Cover (P4) Bearing Housing (P4)
2	30147454	O-Ring, Inspection Cover (P6) Bearing Housing (P6)
1	31852905	Gasket Seal Plate
1	12211110	Key 3/8 X 3/8 X 2.50 Lg
1	21422788	Impeller Washer

# Parts Drawing - 373000105 Bearing Frame Kit

Pump Models  
P4 / P6



30148449 O-Ring, Inspection Cover (P4)  
30148454  
O-Ring, Inspection Cover (P4,P6)

## PN 373000105 Bearing Frame Kit

Qty	Item #	Description
2	30500110	Lip Seal
1	31900106	Bearing
1	31900107	Bearing
1	353005100156	Snap Ring
1	30148273	O-Ring, Seal Plate Cover
2	30148449	O-Ring, Inspection Cover (P4) Bearing Housing (P4)
1	30147454	O-Ring, Inspection Cover (P6) Bearing Housing (P6)
1	31852904	Gasket, Brg Cap
1	318527849	Gasket Seal Plate

31852904 Gasket, Brg Cap

353005100156 Snap Ring

30500110 Lip Seal

31900107 Bearing

31900106 Bearing

30148449 O-Ring,  
Bearing Housing (P4)  
30148454  
O-Ring, Bearing Housing (P6)

30148273 O-Ring,  
Seal Plate Cover

30500110 Lip Seal



310 South Sequoia Parkway, Canby, OR 97013 USA  
Phone (503) 266-4115 ■ Fax (503) 266-4116

[www.pioneerpump.com](http://www.pioneerpump.com)